



METRO BLUE LINE EXTENSION

Field Work in 2023

Field Work Overview

As planning and environmental work continues on the METRO Blue Line Extension Project, you may see project staff in your neighborhood doing field work beginning in spring 2023. Work you may be seeing includes:

Surveying

Surveying measures the elevation of land and the location of trails, roads, walls, existing railroad tracks, overhead utility lines and other structures, as well as property lines. Surveying will be done along the entire proposed route of the METRO Blue Line Extension. Surveying crews usually have two surveyors: one with a tripod-mounted recording tool and another with a vertical survey rod.

Wetland Surveying

Survey crews check the location and boundaries of wetlands that may be affected by the METRO Blue Line Extension project, in order to avoid or reduce the impacts of construction on valuable wetland resources.

Geotech Borings

Geotech borings are needed to collect soil to determine its properties before building on it. Borings are done using a drilling machine on the back of a truck. Crews will bore holes along the center line of the METRO Blue Line Extension route, near existing or proposed foundations of bridges and tunnels. All holes will be refilled the same day.

Environmental Testing

Crews will drill holes two to four inches wide and may dig three to four feet wide test trenches in areas with contaminated soil. Crews will refill the holes and trenches the same day they are opened and will not be left open overnight. Noise from the work will be similar to a medium-sized diesel truck engine.

Subsurface Utility Exploration

Subsurface utility exploration is needed at locations where the light rail tracks will cross underground utility lines. Utility locating crews will use vacuum trucks to remove soil above the utility line in "potholes." Once the utility line has been found, the subcontractor will replace the removed soil. Workers will mark the location of utility lines with spray paint and/or flags. Surveyors with the utility workers will record the location of the markings. The work also includes opening manholes to observe the location of storm sewer and sanitary sewer lines.

Noise / Vibration

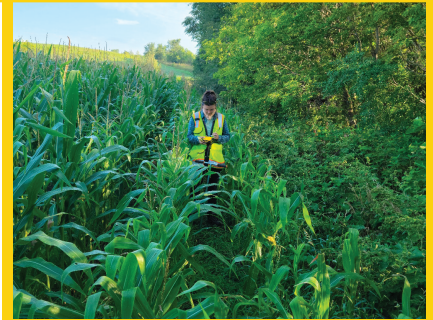
Crews will be using specialized recording to equipment to measure ambient sound along the METRO Blue Line Extension route. Crews will also be using special equipment to measure vibration.

Cultural Resources Investigations

Cultural resources studies are needed to determine if there are historic properties, those eligible for or listed in the National Register of Historic Places, that may be affected by the METRO Blue Line Extension project. Field survey of historical architectural properties will include documenting buildings and structures (primarily from public right-of-way) with photography. This documentation will inform analysis to determine their National Register eligibility.

Archaeological investigation may be required in specific areas where there is potential for archaeological resources. Hand tools, machinery, or other remote sensing devices to conduct subsurface testing (i.e., shovel testing) will be used to locate subsurface features. Limited excavations may also be required to determine horizontal and vertical boundaries.

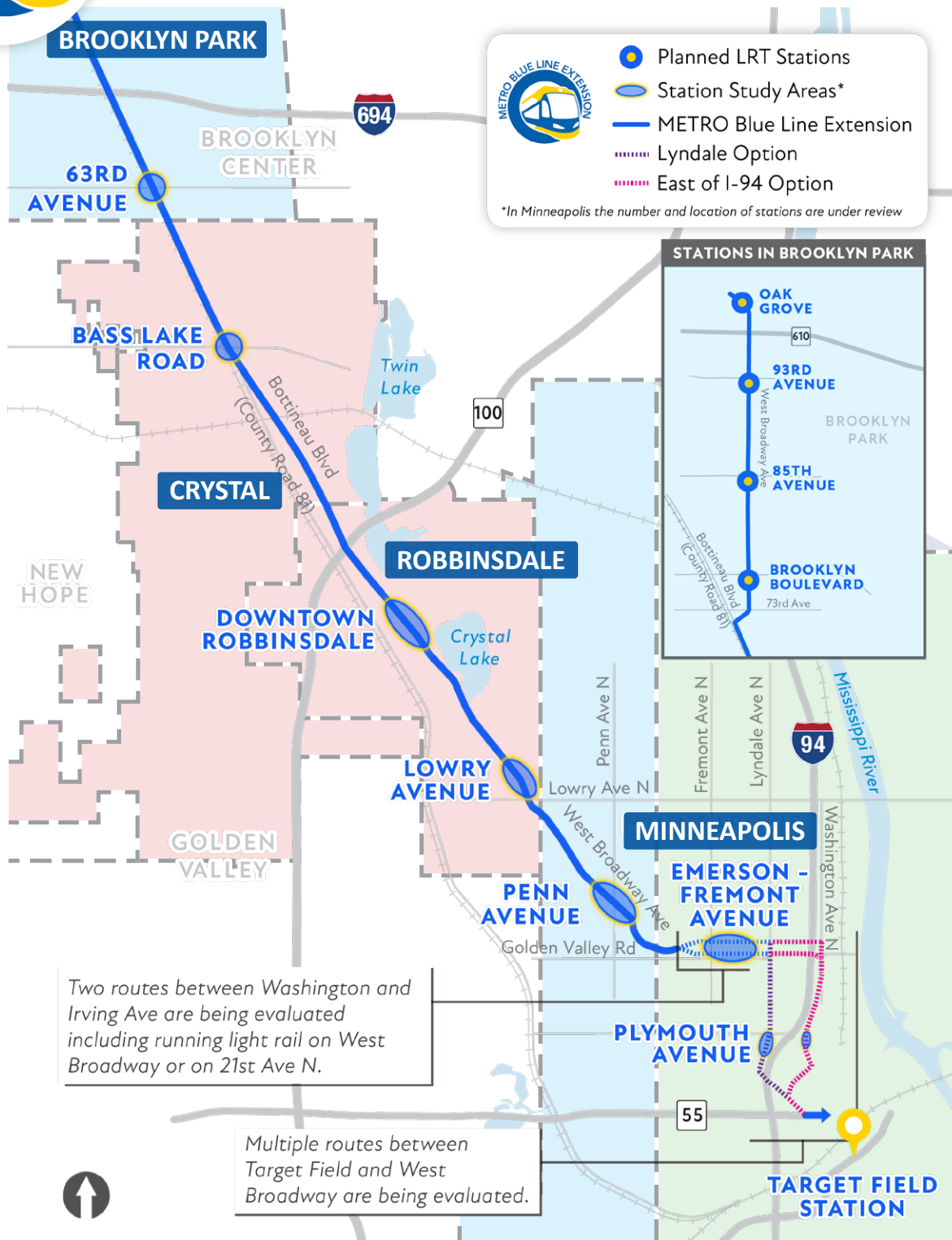
As the project moves forward more field work will take place, you can learn more about the type of field work that will be performed in the future at bluelineext.org/fieldwork.





METRO BLUE LINE EXTENSION

Field Work in 2023



For questions or concerns about surveying, contact the outreach coordinators below based on the city you live in

Brooklyn Park & Minneapolis - West of Logan Ave Outreach Coordinator: Joanna Ocasio-Maisonet - Joanna.Ocasio-Maisonet@metrotransit.org

Robbinsdale & Crystal Outreach Coordinator: Kjerstin Yager - Kjerstin.Yager@metrotransit.org

Minneapolis Outreach Coordinator: Kaja Vang - Kaja.Vang@metrotransit.org